

Rolling bearings
Plain bearings
Linear technology
Coating

FAG

Insutect A

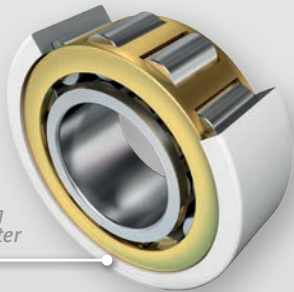
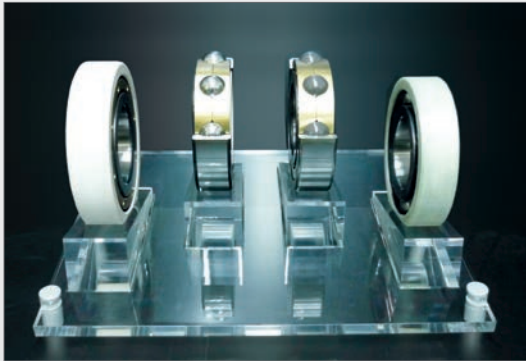
Insulation Coating J20G



SCHAEFFLER

INSUTECT A

Insulation Coating J20G



*Current-insulating
coating on the outer
ring*

Product features

Ceramic coating on the outer ring

Technical advantages

- High capacitive resistance
- High wear resistance
- Cost-effective solution for preventing damage due to the passage of current
- Quick solution for problems with the passage of current

Customer benefits

- Reduced maintenance costs
- Reduced risk of bearing damage caused by current
- Increased operating life of grease

Performance data

- Disruptive strength of up to 5000V DC
- Coating thickness $\geq 700 \mu\text{m}$
- Suitable for wet and dry conditions
- From 70 mm OD

Applications

The same dimensions and tolerances as standard bearings